

ANACOSTIA ANADROMOUS FISH MONITORING

2017 -2018

Phong Trieu
Anacostia Program Manager

Anacostia Management Committee
February 14th, 2019



Blueback Herring

Alewife Herring



Hickory Shad



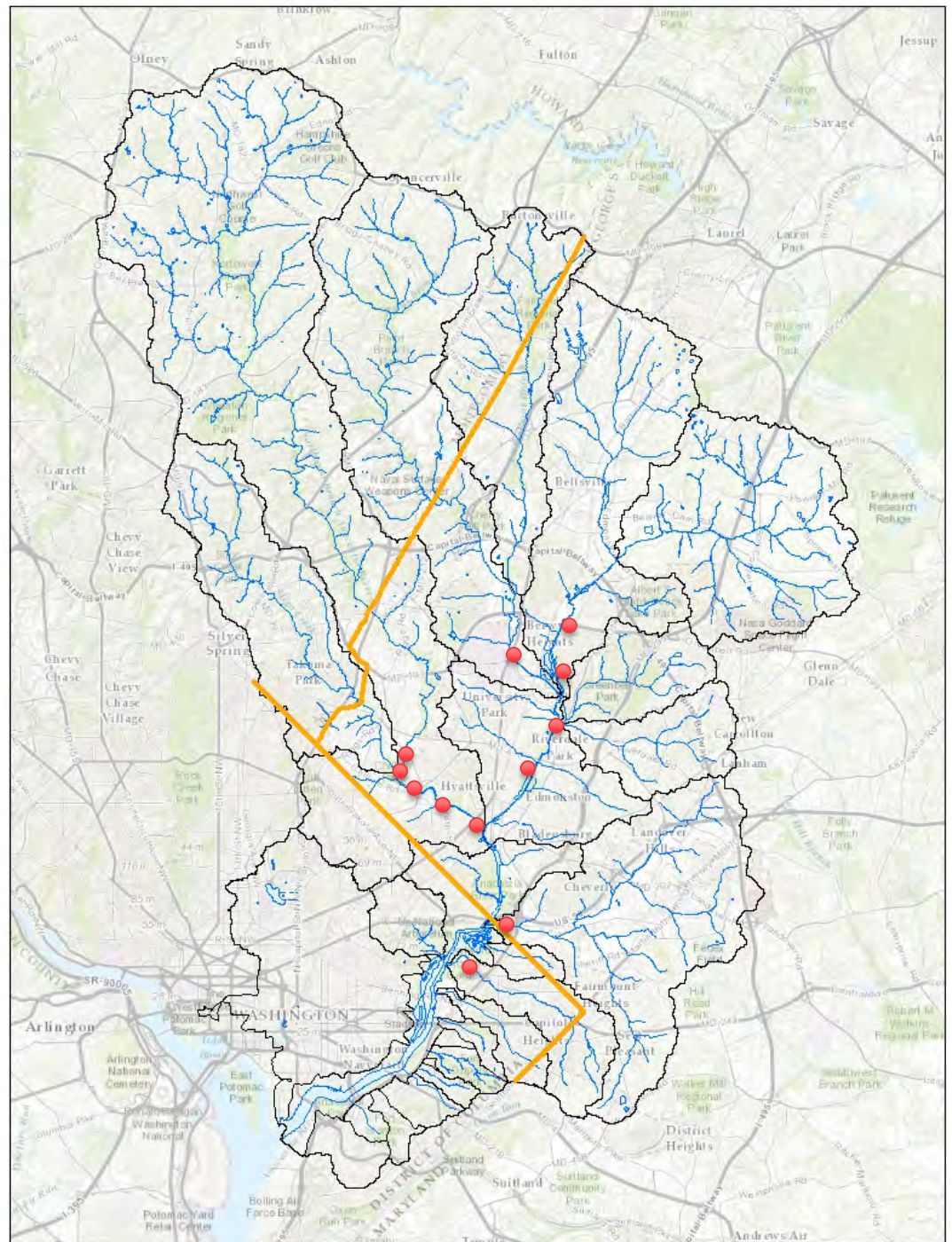
Backpack Electroshocking



Haul Seine



1990's Sampling Station Network

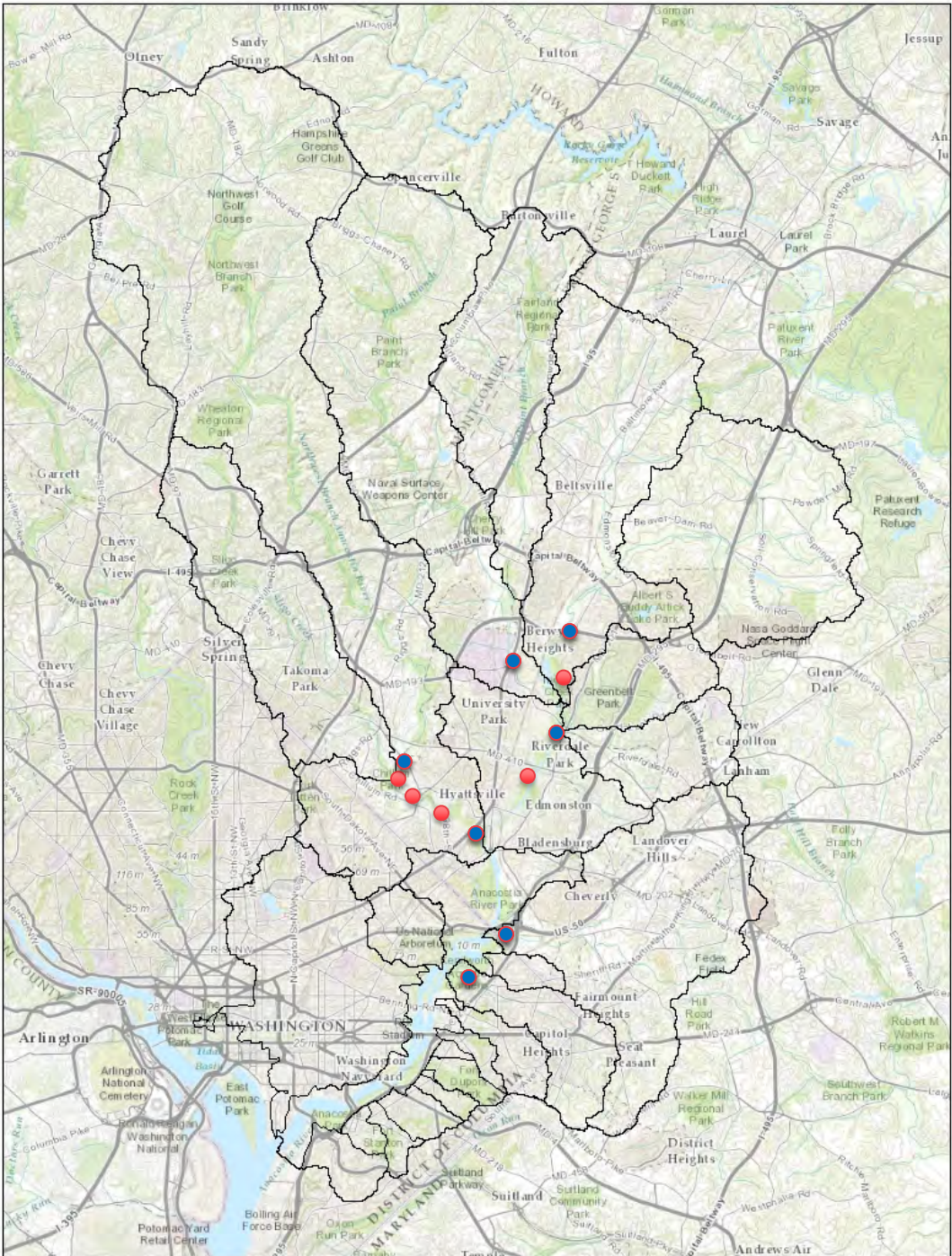








Cogent Sampling Station Network



Metropolitan Washington
Council of Governments

Northwest Branch
US Route 1

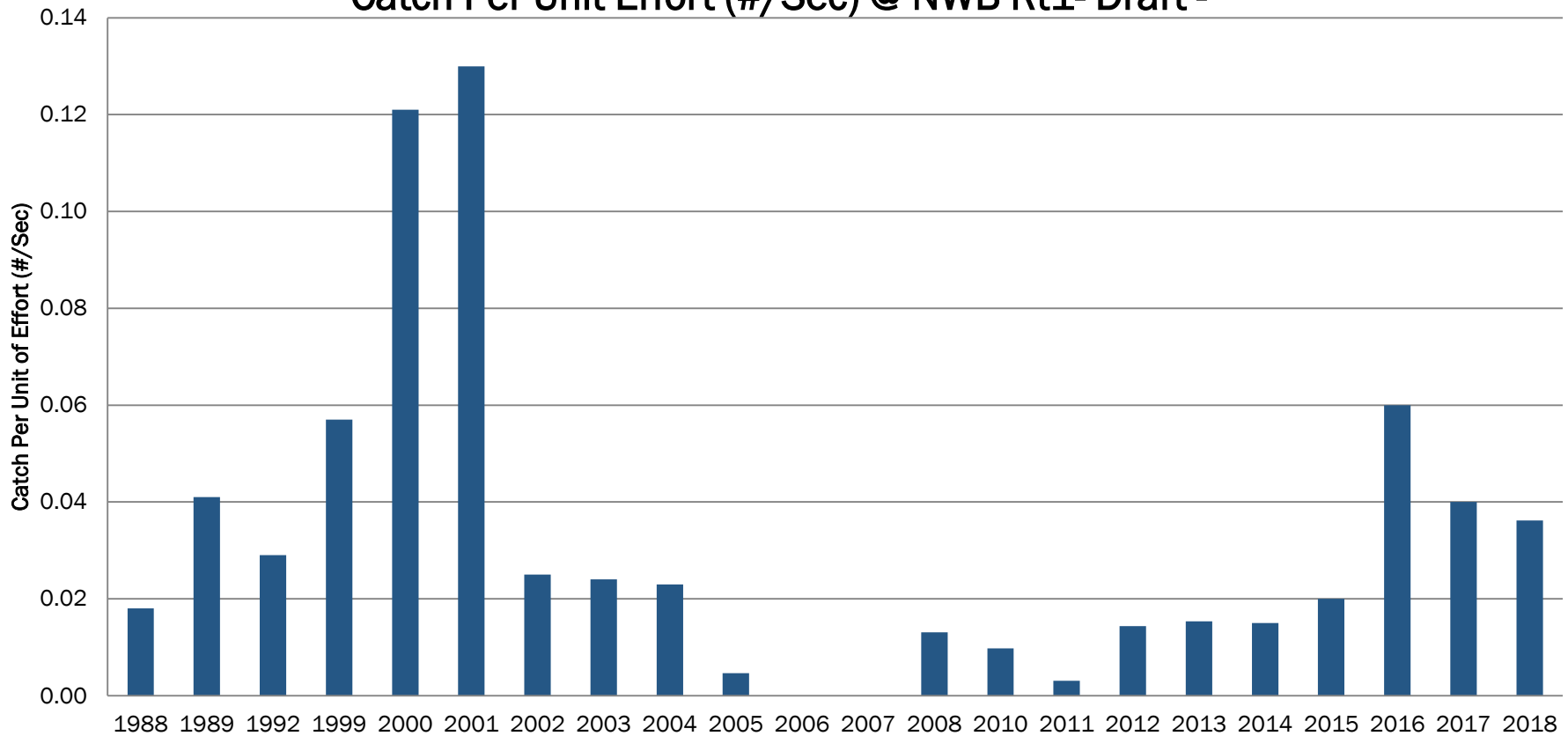




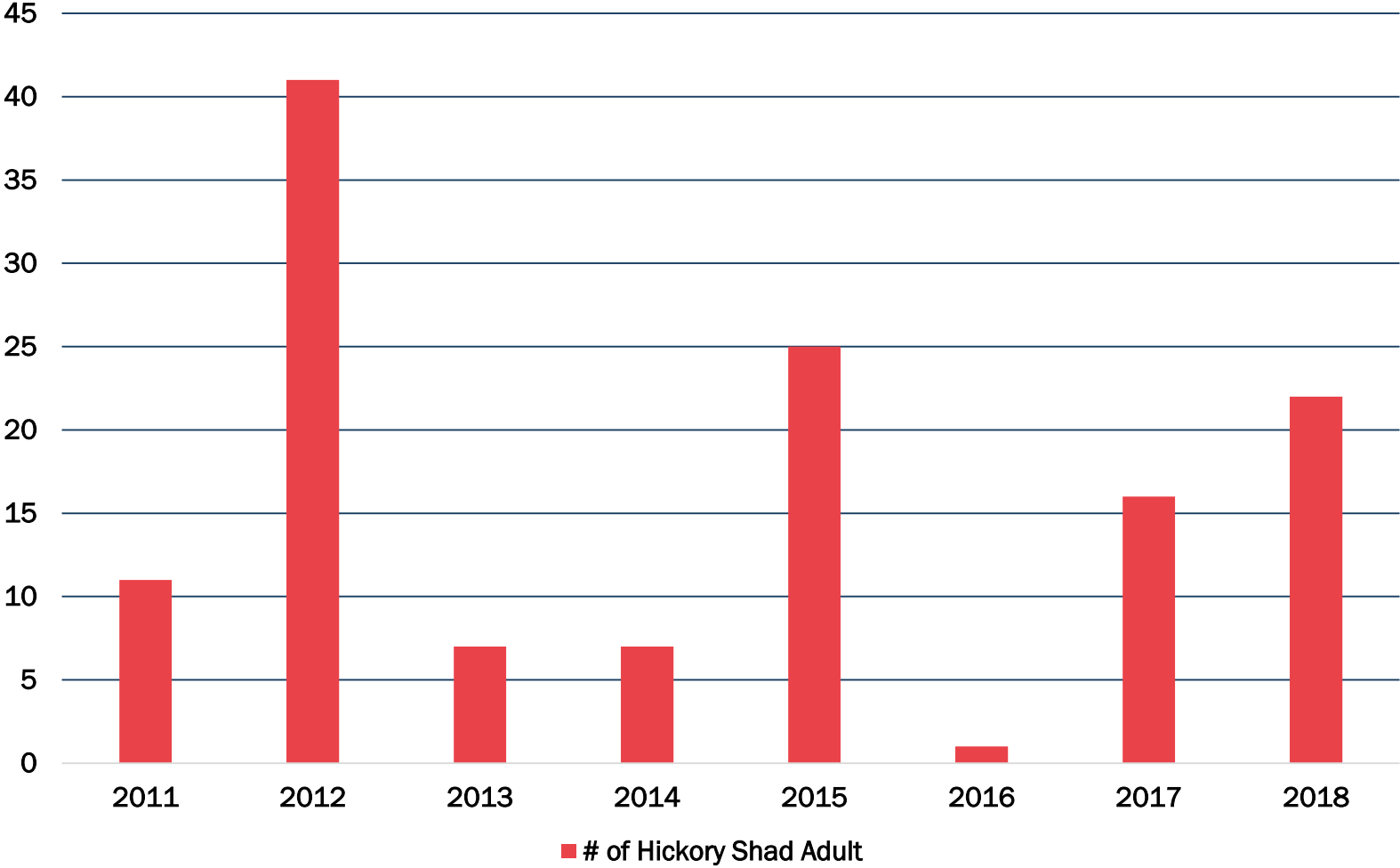
Metropolitan Washington
Council of Governments

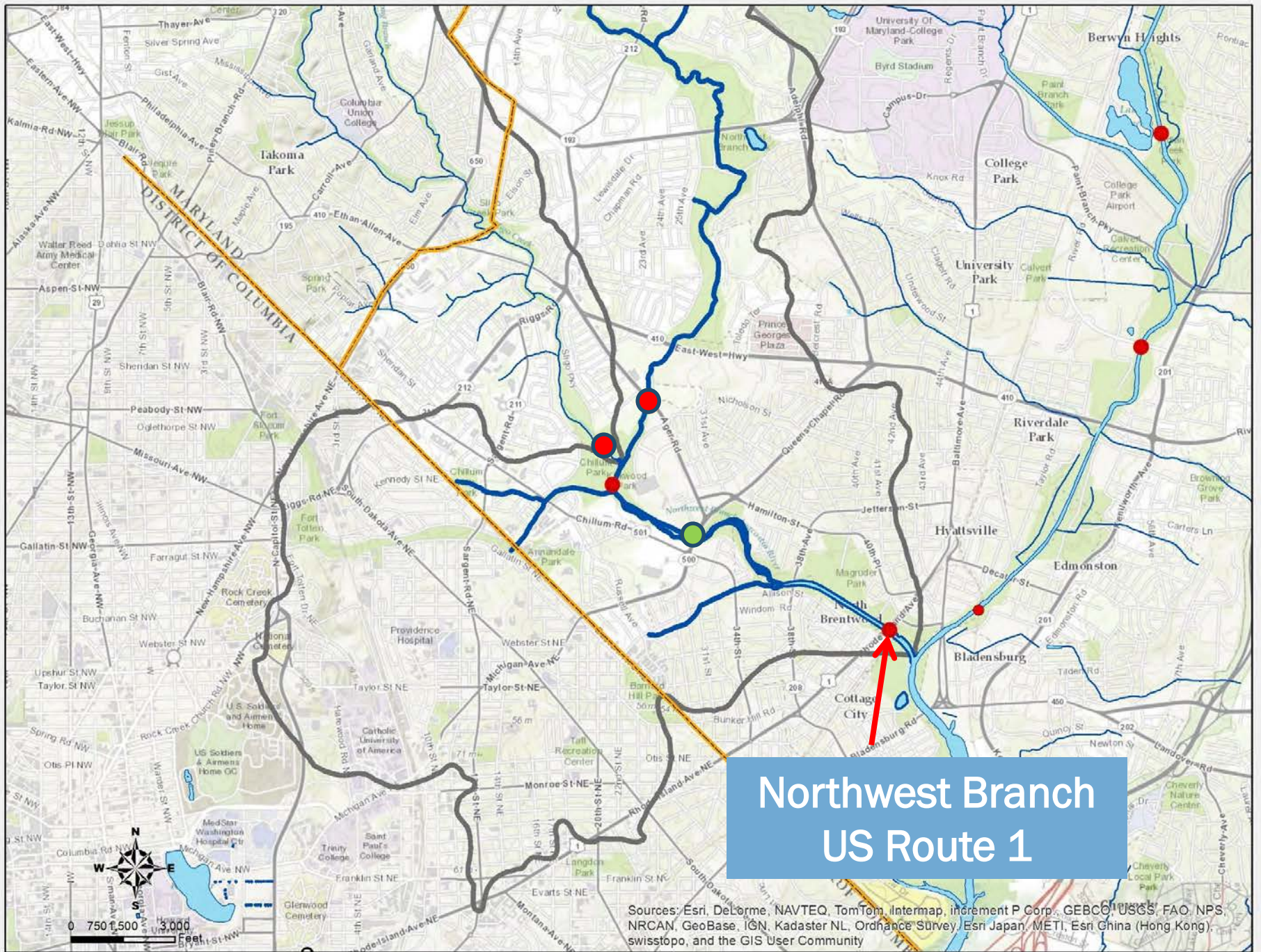


River Herring Catch Per Unit Effort (#/Sec) @ NWB Rt1- Draft -



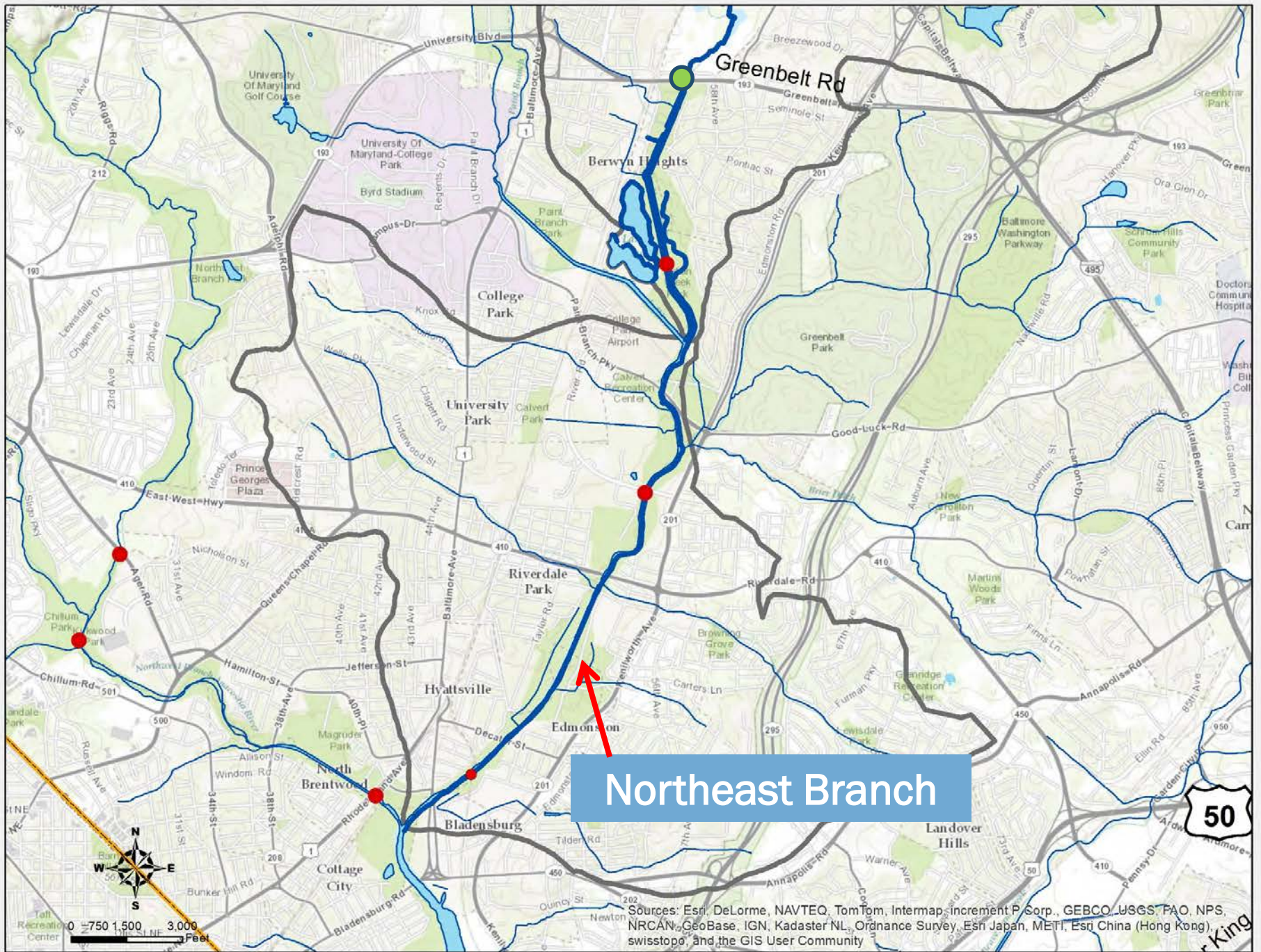
Total Hickory Shad Adult April Haul Seine Event





Northwest Branch US Route 1

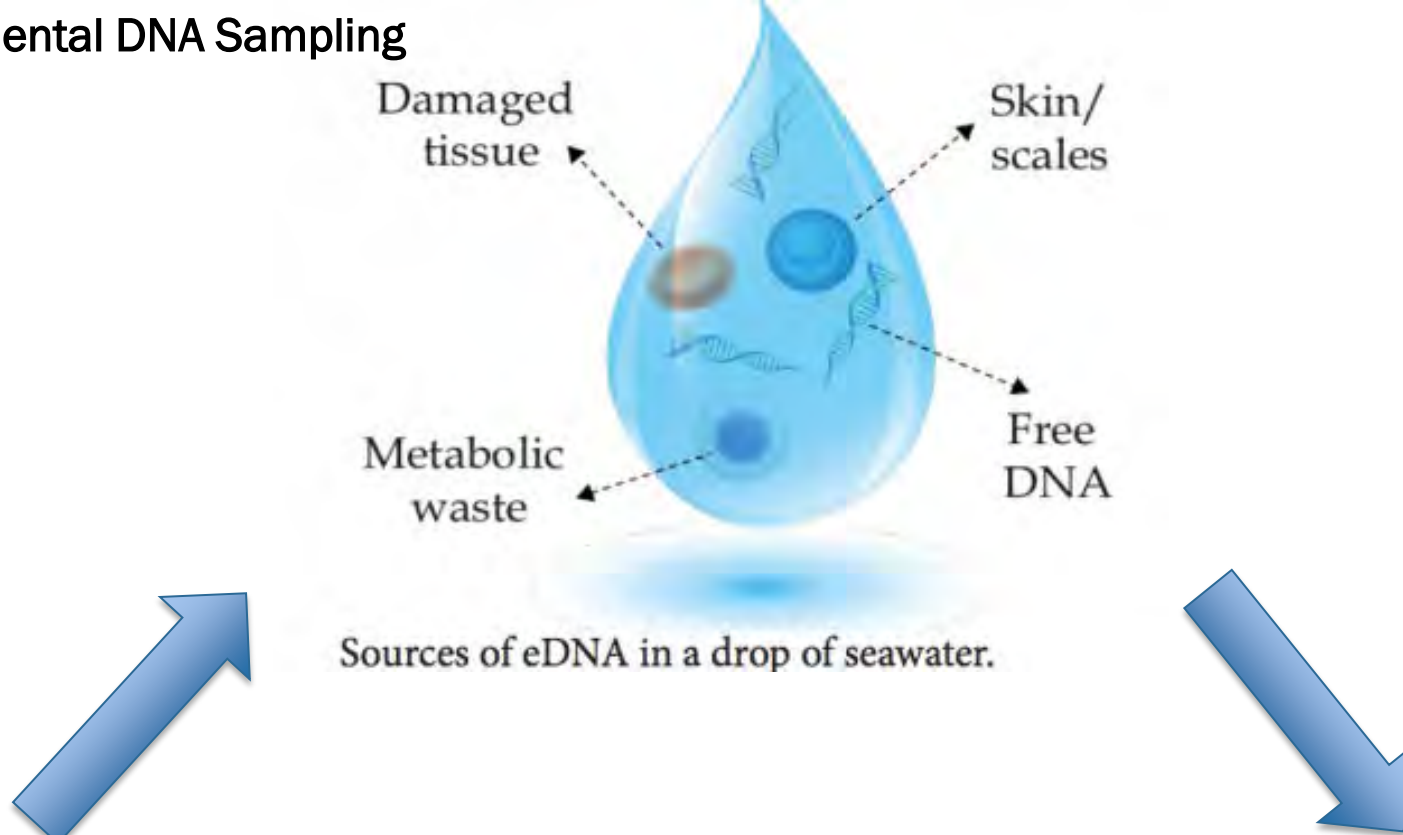
Sources: Esri, DeLorme, NAVTEQ, TomTom, Intermap, increment P Corp., GEBCO, USGS, FAO, NPS, NRCAN, GeoBase, IGN, Kadaster NL, Ordnance Survey, Esri Japan, METI, Esri China (Hong Kong), swisstopo, and the GIS User Community



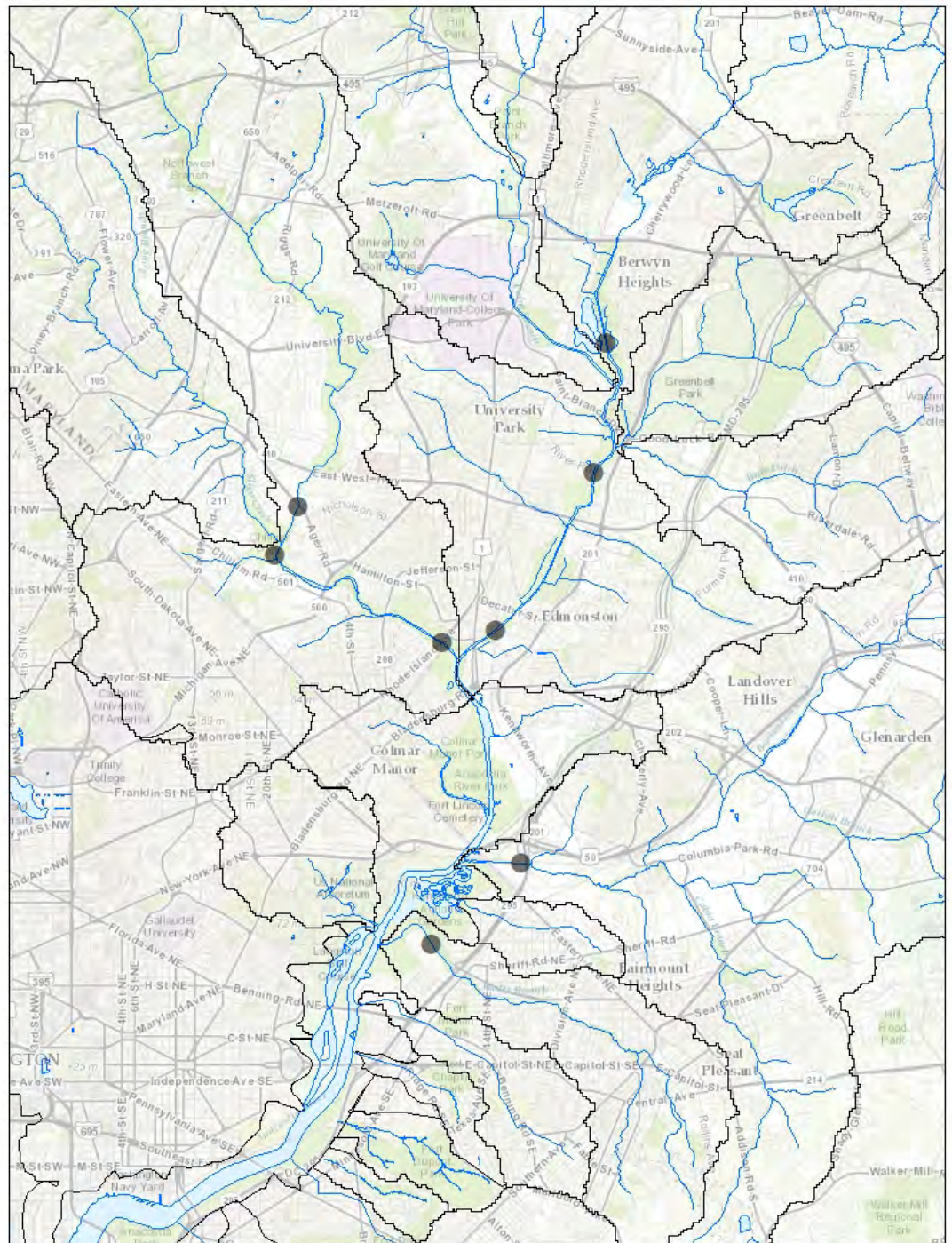
Northeast Branch

Sources: Esri, DeLorme, NAVTEQ, TomTom, Intermap, increment P Corp., GEBCO, USGS, FAO, NPS, NRCAN, GeoBase, IGN, Kadaster NL, Ordnance Survey, Esri Japan, METI, Esri China (Hong Kong), swisstopo, and the GIS User Community

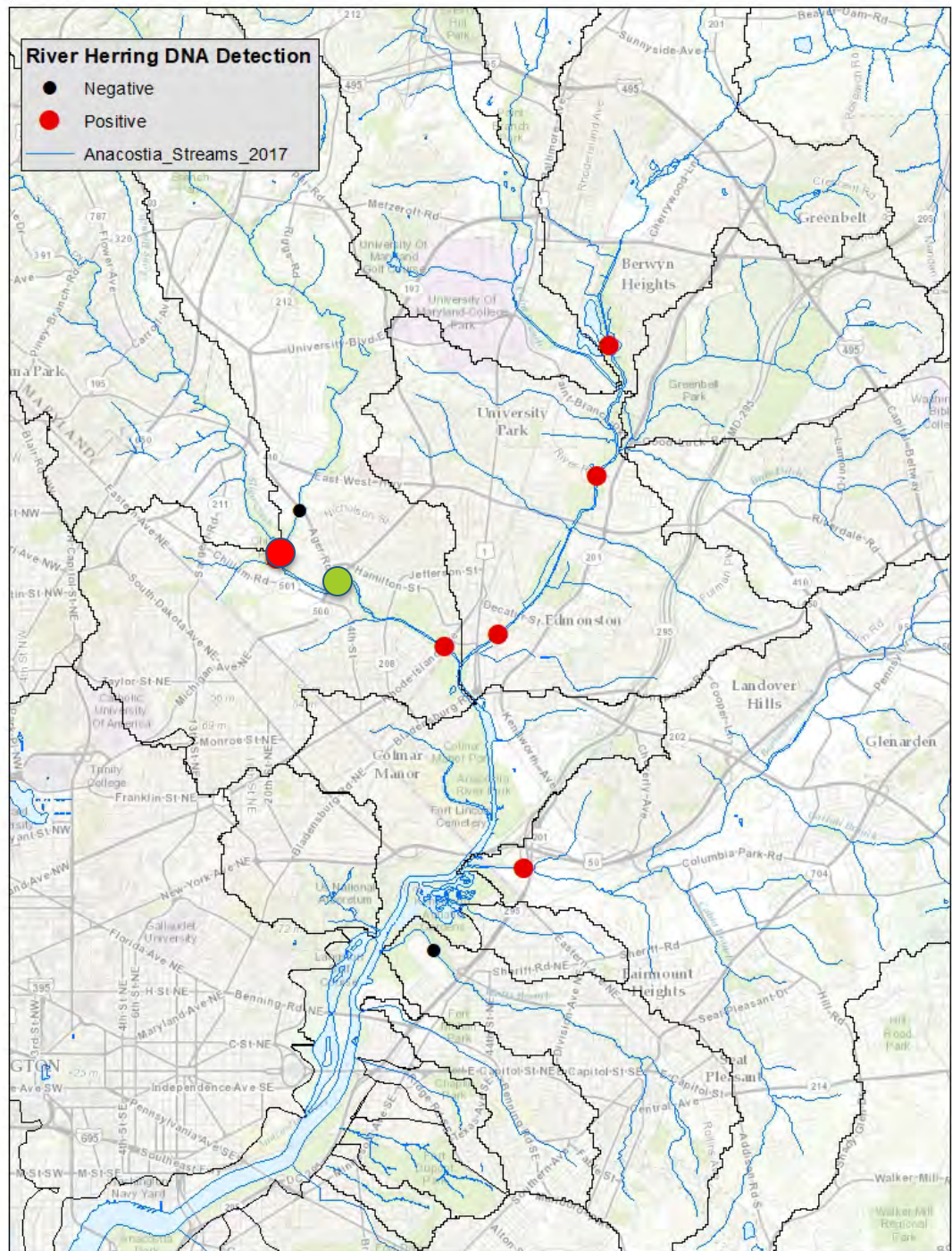
Environmental DNA Sampling



eDNA Sampling Stations



eDNA Sampling Stations





Lower Beaverdam Creek

